

# VIKING STAR II

## Roller Shutter Door

### **SPECIFICATION:-**

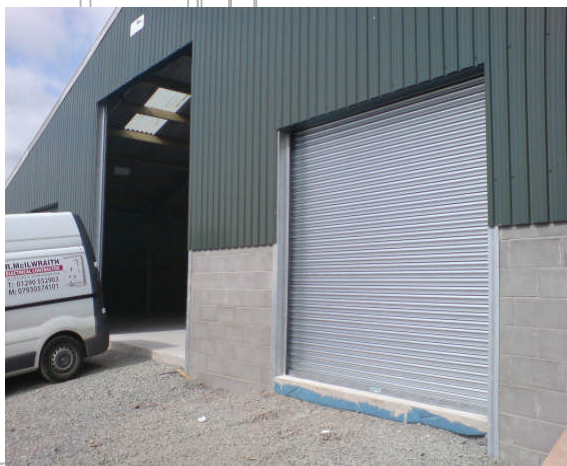
The shutter curtain is constructed from suitable interlocking galvanised steel laths and galvanised "T" section bottom rail, running in galvanised steel side channels, mounted on galvanised steel support angles which are bolted to the structure.

The curtain weight is counter balanced by helical wound springs fitted inside a suitable steel tube barrel assembly at high level, running on steel bearings. The barrel assembly is supported between mild steel endplates and driven through gears.

A pad lockable chain keep is fitted to the drive side of the door for safe keeping/locking of the haul chain.

All mild steel components are finished in one coat of primer.

Doors for openings above 4500mm wide are fitted with our tested wind anchor guide system as standard.



### **OPERATION:-**

Manual operation is by means of a continuous galvanised haul chain, through single or double reduction gearing. A SAFETY BRAKE is fitted to the non-drive end of the barrel assembly to prevent uncontrolled dropping of shutter curtain.

**BS 13241 compliant & CE Marked.**

### **OPTIONAL EXTRAS:-**

- Galvanised Facia
- Canopy
- Rubber Bottom Seal
- Head Brush Seal
- Wicket Gate - Manual
- Guide Locks
- Shootbolts & E/Lock Shoot Bolts
- Espagnolette
- Electric Inter Lock Espagnolette

### **FINISH:-**

- Plastisol
- Galvanised
- Powder Coating

**ADVANCED DOORS LTD**  
PARK MILL WAY, CLAYTON WEST,  
HUDDERSFIELD, WEST YORKSHIRE, HD8 9XJ.

TEL: (01484) 861112 FAX: (01484) 866700  
www.advanceddoors.co.uk



**ADVANCED DOORS LTD**  
14 BEITH DRIVE  
AIRDRIE, ML6 9XN.

TEL: (01236) 766229 FAX: (01236) 763876  
www.advanceddoors.co.uk