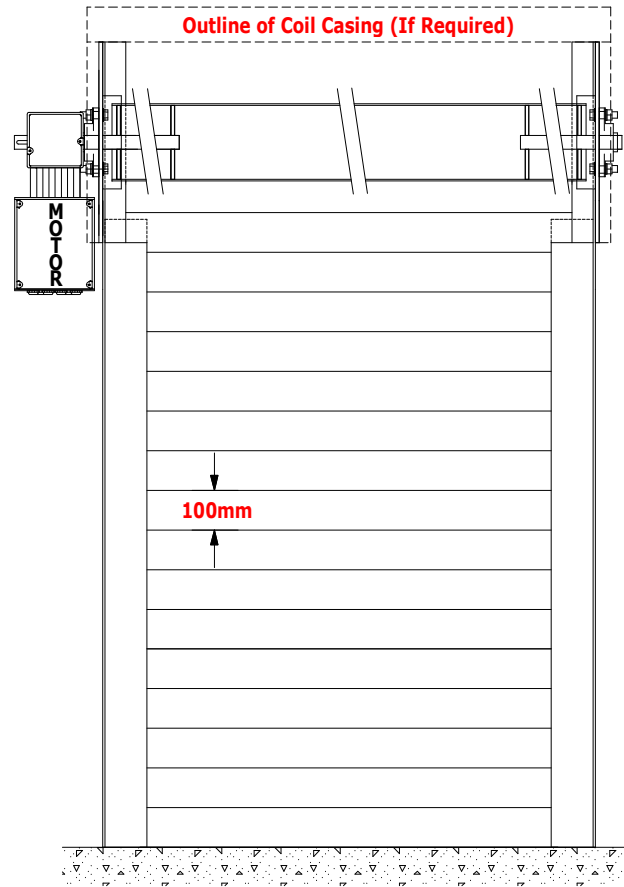
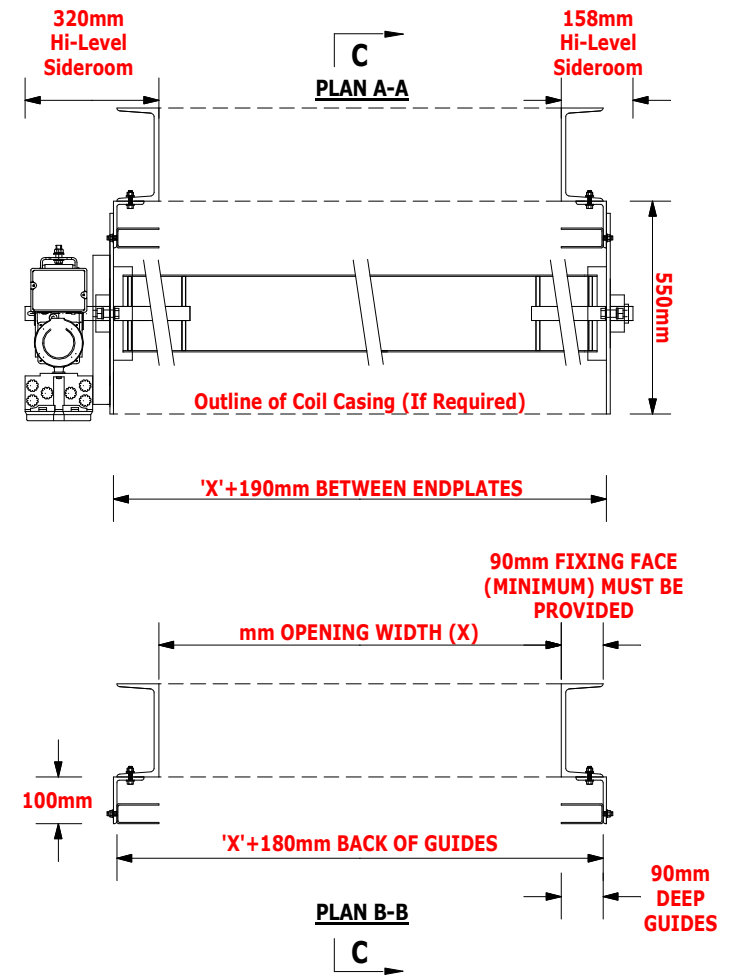


SECTION C-C



ELEVATION



PLAN B-B

PLEASE DO NOT SCALE

ADVANCED DOORS LTD.



Park Mill Way
Clayton West Ind. Est.
Clayton West
Huddersfield
West Yorkshire
HD8 9XJ

Tele (01484) 861112
Fax (01484) 861056
email: info@advanceddoors.co.uk
internet: www.advanceddoors.co.uk

CLIENT:-

SITE:-

DETAILS OF No. "THERMALATH STAR III" STEEL ROLLING SHUTTER DOOR(S)

NOTES:-
DOOR(S) c/w 'SAFEDRIVE' ELECTRIC MOTOR MECHANISMS.
DOOR(S) c/w RUBBER DRAUGHT SEAL TO BOTTOM OF SHUTTER CURTAIN AS STD.

REVISIONS

DRAWING NUMBER

REV

DATE

DRAWN

CHECKED

415 Volts 3ph + Neutral
Supply Drive Motor.

Client to provide mains supply
terminated with an IEC 6039-2 3 Phase,
neutral & earth socket (5 Pin)
positioned at low-level below motor position.

Site Wiring by:- Advanced Doors Limited

Polyester Powder Coat Finish
COLOUR:-

Galvanised/Plastisol Curtain Finish
COLOUR:-