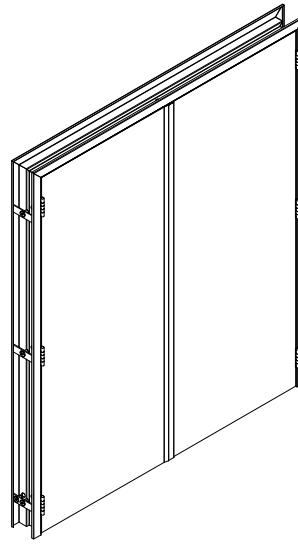
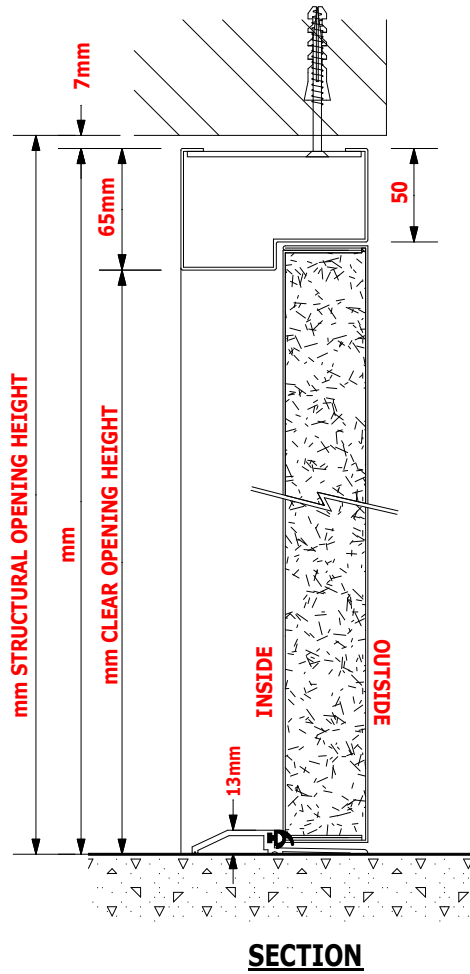


**DO NOT SCALE**

**DOOR REF**



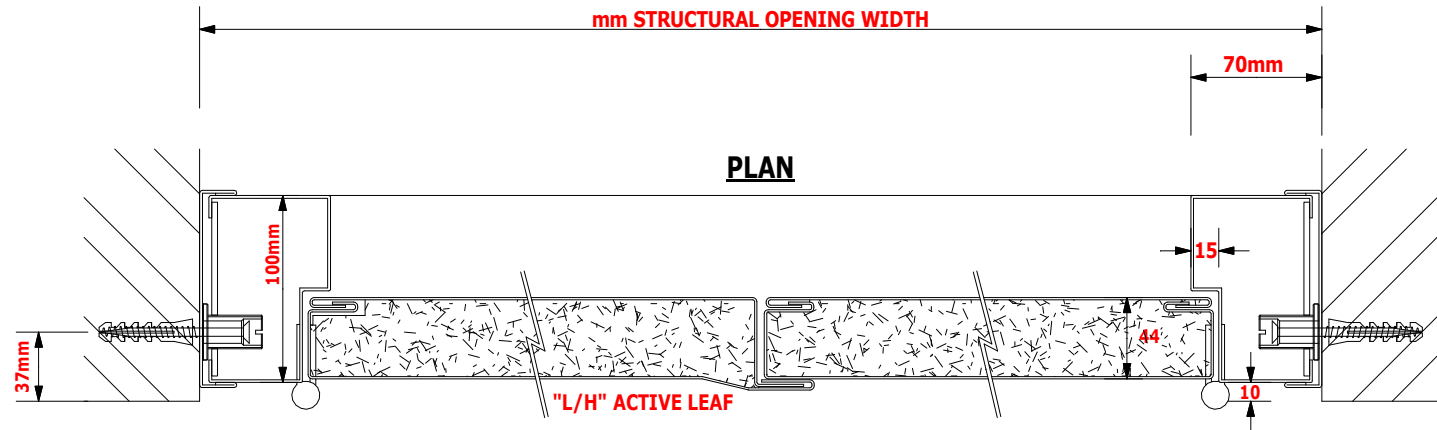
**ELEVATION**  
(VIEWED FROM OUTSIDE  
ILLUSTRATION ONLY)

**IRONMONGERY SCHEDULE:-**

- INTERNAL PANIC LATCH (UNION 803)
- INTERNAL PANIC BOLT (UNION 801)
- EXTERNAL KEY LOCKABLE ACCESS KNOBSET (UNION 805)
- INTERNAL PANIC BOLT SYSTEM (UNION 802) - BOTH LEAVES
- FLUSH BOLTS (SLAVE LEAF)
- MORTICE SASHLOCK (DIN), EURO CYLINDER & TURN,  
PAIR OF LEVER HANDLES (NEMEF 1764-24)
- OVERHEAD DOOR CLOSER (ABLOY DC335)
- HEAVY DUTY FRICTION STAY (SAMPSON)
- STAINLESS STEEL DOG BOLT HINGES (3no PER LEAF)
- 13mm RAMPED ALUMINIUM THRESHOLD (DDA COMPLIANT)
- WEATHERSEALS TO HEAD & JAMBS
- INTERNAL / EXTERNAL EMERGENCY EXIT SIGNAGE

**POWDER COAT FINISH:**

BS / RAL



**PLAN**

**ADVANCED DOORS LTD.**



Park Mill Way  
Clayton West Ind. Est.  
Clayton West  
Huddersfield  
West Yorkshire  
HD8 9XJ

Tele (01484) 861112  
Fax (01484) 861056  
email: info@advanceddoors.co.uk  
internet: www.advanceddoors.co.uk

CLIENT:-

DETAILS OF No. DOUBLE LEAF "HYDRA SD1" DOORSET(s)

DOOR(s) HANDED AS SHOWN (LH)

SITE:-

NOTES:-  
ALL MASTIC INFILLING BY OTHERS  
STRUCTURE TO BE CAPABLE OF RECEIVING FIXINGS WITHOUT CRACKING OR DISTORTION

REVISIONS

DRAWING NUMBER

REV

DATE

DRAWN

CHECKED