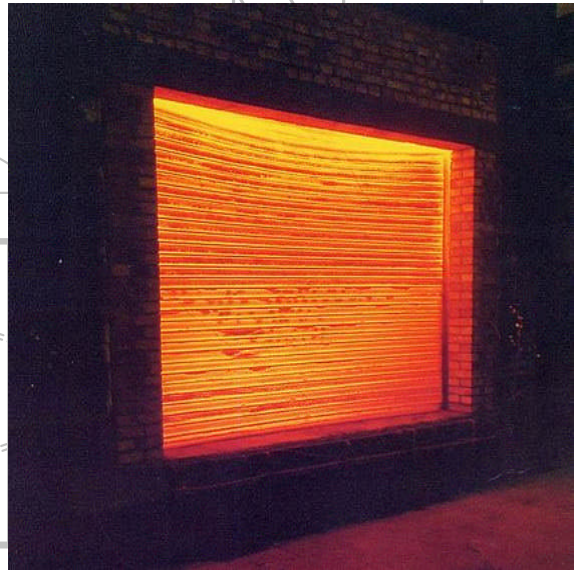


FIREBLADE & FIRESTORM Roller Shutter Door

SPECIFICATION:-

The Advanced Fire Resistant Roller Shutter Door has been tested in accordance with BS476: part 22: 1987 (method 8) by the BRE, at their Technical Centre, (Test Report No. TE85423), and is assessed to a maximum size of 7000mm wide and 7000mm high give up to 4 hours fire protection.

The tested door was fitted with our controlled descent operator which was witnessed by the BRE and included in their test report. The controlled descent operator ensures the Health & Safety of personnel who may be within the closed proximity of the door when the self-closing mechanism is activated.



The shutter curtain is constructed from suitable interlocking galvanised steel laths and galvanised "T" section bottom rail, running in galvanised steel side channels, mounted on mild steel support angles which are bolted to the structure.

The curtain weight is supported from a suitable steel tube barrel assembly at high level, running on steel bearings. The barrel assembly is supported between mild endplates and driven through gears. A galvanised steel coil casing is provided as standard. All mild steel components are finished in one coat of black primer.

OPERATION:-

Manual operation by means of continuous galvanised haul chain for opening and a pull cord disengage device to give controlled descent on closing. Due to the gearing within the controlled descent operator, the manual operation is a slow process and is designed for occasional use only.

Electrical operation is by means of a high quality single or three phase controlled descent operator. All controls are low voltage and have open, close and emergency stop button as standard. Emergency manual over ride is provided as standard to allow operation of the door in case of power failure.

APPLICATION:-

Each door is purpose-made to suit site dimensions and requirements and is suitable for all types of industrial use where up to 4 hours of fire protection is required. The door can be linked into the fire alarm system, smoke detectors or any other triggering device to give automatic controlled self-closing, or can be supplied as a stand-alone system with a thermal fusible link activating at 68°C.

ADVANCED DOORS LTD
PARK MILL WAY, CLAYTON WEST,
HUDDERSFIELD, WEST YORKSHIRE, HD8 9XJ.

TEL: (01484) 861112 FAX: (01484) 866700
www.advanceddoors.co.uk



ADVANCED DOORS LTD
14 BEITH DRIVE
AIRDRIE, ML6 9XN.

TEL: (01236) 766229 FAX: (01236) 763876
www.advanceddoors.co.uk

FIREBLADE & FIRESTORM

Roller Shutter Door

- Self contained batteries to maintain the panel in event of mains power failure.
- 3 x 7-segment display of programming indicator.
- Audiovisual warning displayed.
- 16 different audio tones available.
- Panel can be activated by volt free Normally Open or Normally Closed contacts, 2 to 30Vdc input.
- Options include Solenoid drop, Powered close and two stage closing.
- LED's provide visual indications.



APPLICATION:-

The fire control panel provides total control of commercial and industrial fire resisting rolling shutters in the event of a fire. The FCP03 interfaces directly with the fire alarm on site and provides the fire resisting roller shutter with the intelligence to close in the event of a fire, protecting both occupants and premises from exposure to smoke and flame damage.

Detection of mains failure, low batteries, fire signals and via volt free relays can also interface with building management, escalators and lifts.

INSTALLATION:-

The panel can be programmed to suit the specific requirements for the site that it protects. The FCP03 provides both visual and audio warnings before the shutter closes indicating to anyone in the danger zone to move from the shutters path to avoid injury. In accordance with the latest EU Directives the control panel meets the requirements for safety in use.

Measurements:
Width 238mm, Length 255mm, Depth 117mm.

ACCESSORIES FOR USE WITH CONTROL PANELS:-



Smoke Detectors



Photo Beams



Three Push Button Control Station



Key Switch

