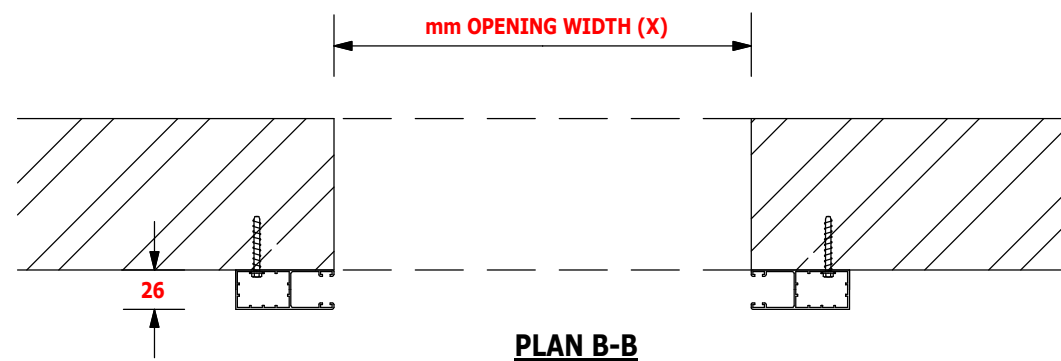
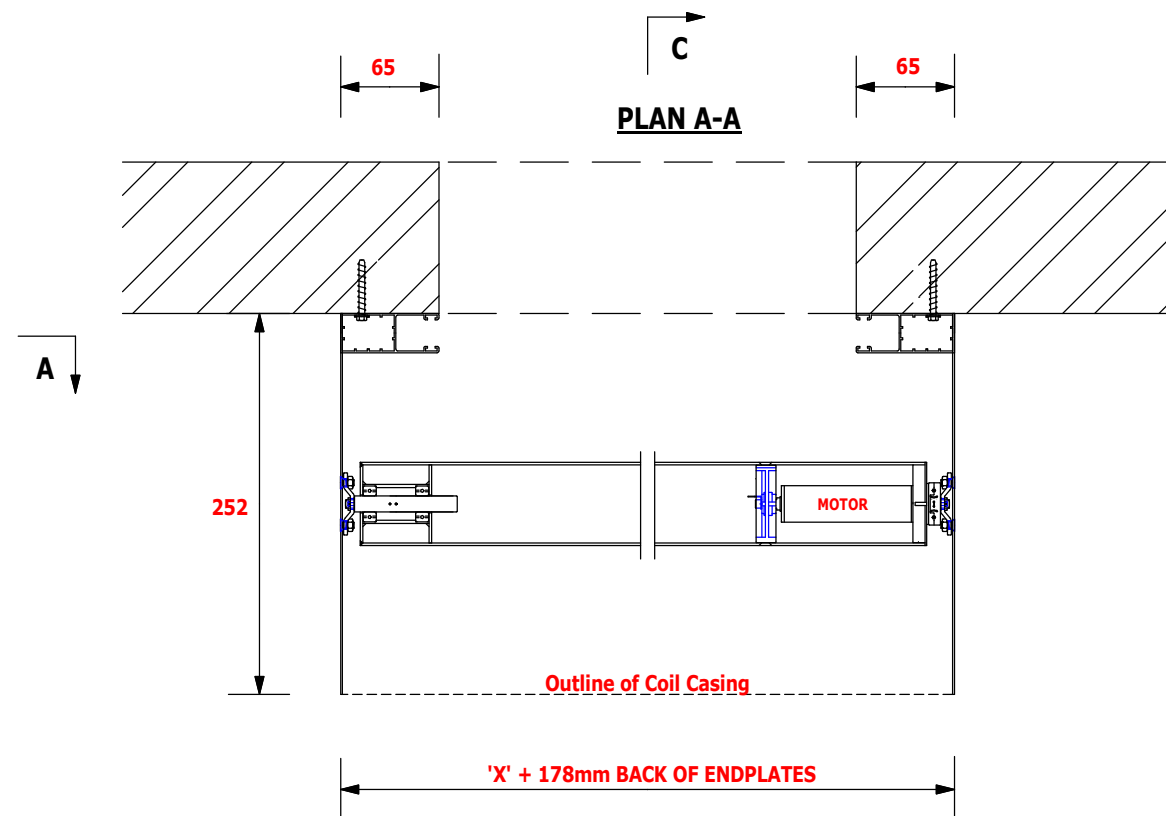


SECTION C-C



PLAN B-B

"Access AEG 456" Electrically Operated Aluminium Punched Lath Roller Shutter

Specification: -

Specification: - Shutter curtain constructed from 56mm extruded mill finish aluminium punched (80mm x 30mm slots) laths running in aluminium side guides with brush seals. The shutter curtain is suspended from a suitable steel tube, mounted between aluminium endplates at high level. The door is provided as standard with a two part aluminium coil casing.

Operation: -

Electrical operation is by means of high quality single-phase tubular motor and gearbox fitted within the barrel assembly. An emergency manual hand crank over-ride is provided as standard to allow operation of the door in case of power failure (provided on door side of opening only).

Electrical Operation (240v c/w Wiring)

Electrical operation by means of 240 volt, single phase tubular motor operator, mounted within barrel assembly. All electrical wiring is by means of S-Y & Y-Y cabling. If conduit or alternative is required this is available at extra cost. Please note that a power supply MUST be available at time of installation. Clients to provide mains supply terminated at a fused spur positioned within 1 metre of final motor position

Notes:

- " Unless stated otherwise fused spur to be on same side of opening as door.
- " Unless otherwise stated, all activating and/or control equipment (e.g. push buttons) will be located within 1000mm of structural opening.

INCLUSIONS:-

REV	BY	DATE	DESCRIPTION

CLIENT:-

SITE:-

SCALE AT A3:- 1:5	<p>No. "Access AEG 456" DOOR(s)</p> <p>ADVANCED DOORS LTD.</p> <p>Park Mill Way Clayton West Ind. Est. Clayton West Huddersfield West Yorkshire HD8 9XJ</p> <p>Tele (01484) 861112 Fax (01484) 861056 email: info@advanceddoors.co.uk internet: www.advanceddoors.co.uk</p>
DATE:-	
DRAWN:-	
CHECKED:-	
DRAWING NUMBER	REV

